



Community School Yard

"Community School Yard Forum: Connecting Schools & Community Around Young People & Children" - St Kilda Town Hall, 5 August 2003

The "Community School Yard Forum" was held on Tues 5/8/03 and provided a unique opportunity for local residents and community members, educators, young people, parents, local support services and Council officers, to come together to create a shared vision and develop a way forward which will ensure all young people get the best chance to fulfil their aspirations and reach their personal potential.

The forum was organised through the fantastic collaborative efforts between the City of Port Phillip, Southern Regional DE&T, local schools: Albert Park SC, Middle Park PS, St Kilda Park PS, St Kilda PS, Port Phillip Specialist S, Victorian School for the Deaf, Montague Continuing Ed, Port Melbourne PS, and community support agencies; Inner South Community Health Service, ARDOCH Youth Foundation and the South Melbourne Youth Outreach Program.

The day started with recognition of the traditional owners of this land the Kulin Nation, followed by opening addresses of support, endorsement and welcome from John Scheffer MLC for Monash Province, Liz Johnstone, Mayor of Port Phillip and Denise Ramus Senior Education Officer DE&T.

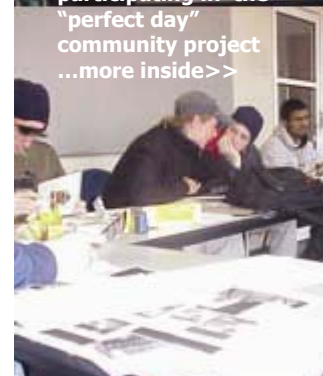
The rest of the day was a wonderful, energetic combination of presentations by our special guests from the USA, Bridget Gothberg, Bob Wittman & Dan Kuzlik, and a number of wonderful performances by local young people. Bridget, Bob and Dan facilitated the forum and generously shared with the community of Port Phillip their experience and wisdom.

The "Community Schoolyard" concept is built on the belief that everyone has a collective responsibility for young peoples' learning, nurturing, well being and support. Young people are our future; they are the assets of our community and culture and have a wealth of skills and talents waiting to emerge and be nurtured

The 175 participants who so actively contributed on the day will no doubt take a myriad of experiences and impressions away with them. It was very clear, there was an overwhelming commitment to a shared vision and the creation of genuine partnerships for future action; when you bring together the Community's resources, expertise and support in conjunction with those of schools the community's capacity to meet the diverse needs of young people will be richly increased.



VCAL Students
participating in the
"perfect day"
community project
...more inside>>



inside

- ➔ **VCAL News...**
Certificate II in broadcasting
Coles Myer
- ➔ **News & Announcements...**
Sue Carey - update Local Government Forum
Alfred Cams
Credit Matrix
New Staff member
- ➔ **Projects...**
Korie Research
Perfect Day Community project
- ➔ **Members... Profile**

Members



Katya Charlamow

Katya Charlamow is the Adult Education Coordinator at Elwood/St.Kilda Neighbourhood Learning Centre. She is a member of the IELLEN committee of management.

Her position at ESNLC involves coordinating the education programs. They have a diverse range of students from over 20 different countries who come to the centre to learn English and attend classes. Katya loves the difference and energy of students learning together and forming friendships.

She is also involved with the "Roomers" saying "I enjoy participating in these projects as it extends my community involvement and once again embraces diversity. IELLEN has been a positive experience for me as I have broadened my experiences".

Caitlyn McCloughlin

is the Coordinator of Family and Youth Support Services for the City of Port Phillip and has been a member of the IELLEN Committee of Management since March 2002. Caitlyn is responsible for a range of services including Maternal & Child Health, Family Support and Youth Services. The City of Port Phillip has a long record of supporting initiatives with strong early intervention and prevention focus which are also local, community based responses to the needs of families and young people. An indicator of this commitment is Councils current involvement in the "Community Schoolyard – Local Asset Building" strategy which is being developed with all the Port Phillip schools, community members, local services and young people.

Caitlyn has worked in the local government sector for over 20 years, mostly in the management and development of services for children and families. The combining of youth services with family services at the City of Port Phillip has provided an unique opportunity to create an integrated strategic framework which recognises that young people are not only members of the community but are also part of families as well.

Looking for Guest Speakers

Members of the IELLEN CoM are planning to visit local community organisations to spread the word about the IELLEN, presenters will inform groups of the projects that are being undertaken and try to increase the awareness of IELLEN..... if your group or organisation is interested in having a member speak at an upcoming event or meeting contact: cthompson@iellen.org.au

get involved

Contact the Subcommittee convenor for further information

Membership & Promotion	c/o Marion Salvage 8598 9033
Research & Innovation	Carolyn Scriven 9835 0250
Training & Industry	Paul Delphine 9627 6649
Policy, Planning & Development	John Macdonald 9523 1466

Can YOU offer any of the following?

- Supported work placements.
- Industry experience
- Participation in a mentor tutor program
- Industry commitment to establish an industry focused VCAL
- Commitment to work on the Committee of management

Contact Cate Thompson 8598 9033 or email: cthompson@iellen.org.au



Community broadcasting

VCAL Students participating in the Community Broadcasting course offered by SKA TV in partnership with the IELLEN are moving into the TV studio to begin the next step of the program. They will gain hands on experience with TV Cameras and editing equipment. Rob Pictured on the right commented "it is a good course. It helps me develop skills I already have and offers me a pathway into the industry" Matt Pylka agrees saying "I am using the course to add to what I already know about working with cameras" and Josh Stratford added "Swinburne Secondary college is a good environment for this type of course with the facilities it has available and I think that Cam the instructor is doing a good job"



The perfect day:

An exhibition of photographs by young people will run for two weeks following the opening on October 17th at the: Young People's Resource Centre, 35 Fairholm Grove Camberwell

The exhibition will be the final stage of a unique VCAL project involving a group of young people. This project focuses on young people and will present a visual interpretation on how they see their lives in the local community.

The project is a collaborative one between Boroondara Youth Services, the Inner Eastern Local Learning and Employment Network, Swinburne Senior Secondary College and Swinburne TAFE. For more information contact:

Maureen O'Shaughnessy

Tel: 9882 2621

Coles Myer VCAL

In 2004 local Students will have access to another retail opportunity in VCAL. Coles Myer have recently agreed to participate in a VCAL program. The program allows young people to undertake part of their year 11 studies in Coles Myer, gain practical employment skills, year 11 subjects, Certificate 11 in Retail Training AND payment for the hours worked – they will be able to 'earn as they learn' Typically students will work two days a week and attend school for the other three days. At the completion of the program they will have gained their year 11 and Certificate 11 in Retail Training, have practical employment skills and have earned income.

For more information:

Contact: Penny Vakakis

T: 9686 9435 or email

penny@albertpark.vic.edu.au

St. Lukes Outreach

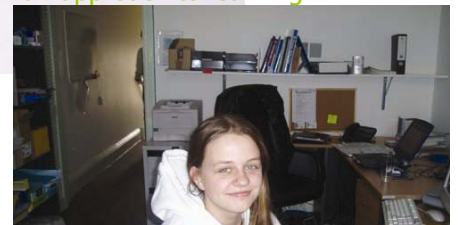
IELLEN is working with St Lukes Outreach Project offering young people a chance to upgrade their computer skills and participate in the creation of a local community newsletter – if anyone has any computers or computer equipment that they no longer require contact Rosemary Snibson stlukes@infoxchange.net.au Or T: 9686 8521

VCAL Student Profile

Elissa Cox is currently doing VCAL at Caulfield Park Community School. She says "the program unlike VCE, has given me and my fellow classmates a better view as to what it's going to be like, out of the safety net of the school. VCAL offers a lot of opportunities for young adults, that VCE does not.

For about 20 weeks our school has been involved in 3 various TAFE courses as part of our Industries criteria for VCAL. We have learnt basic skills in Furnishing, Glass and Glazing and Engineering. Each student has been able to walk away from this with not only a new mirror or table, but also with a few basic skills and a smile in their face as well.

VCAL still offers the basic core subjects like Math's and English, but has involved a more hands on and fun approach to learning".



Koorie Research Project

This project is being undertaken by Change Unlimited - Cath McKay & Irene O'Loughlin will be surveying relevant Koorie organisations and general youth support networks to identify needs and find the gaps that prevent Young Koorie students living in the area from accessing training and education. The report will make recommendations to the Com to improve opportunities

What's happening...

Congratulations and Best wishes go out to Sue Carey who has given birth to a beautiful baby boy, Liam pictured below. Sue has been a committed supporter of IELLEN and managed the implementation of the On Track Connect project.



~~October 23rd~~ - **Local Government Breakfast Forum** date changed. Details to follow

Oct 21st – Careers Teachers Forum
Mecanix Restaurant 12 noon more details check out www.iellen.org.au

Oct 21st – Tertiary Transition forum
IELLEN is implementing a program to reduce the high drop out of Tertiary students... for more info attend the forum at Swinburne University of Technology Prahran Campus room PE 206 more details check out www.iellen.org.au

Andrew Davis – Project Officer

Current project responsibilities include *On Track Connect* and *On Track in Schools* in which Andrew provides one on one support and advice to young people who have disengaged or are at risk of disengaging, and can assist them by providing advice / linking them in with alternative study pathways, work opportunities and other support agencies. Andrew keeps in contact with schools to offer MIPS support to at risk students and to regularly promote our sponsored off-campus programs like TAFE Tasters. Andrew also oversees our *Mentoring* Program. His current research projects include: Work Readiness / Transition from School to Work, Effectiveness of VCAL. Contact Andrew – adavis@iellen.org.au



Resources

Need a Caterer for your next meeting or event

Consider Deli 100 – located at 100 St. Kilda Road. Denise Bradbury offers a wonderful menu and we can attest to the fact that the food is delicious as she has been catering for the IELLEN meetings and forums since we moved to St. Kilda. Denise also offers casual work and work placements to local students in the area For more information or to book for your next event

Contact: **Denise Bradbury**

T: 9525 4301

M: 0414 400039

The BKGB LLEN and IELLEN hosted a forum for the VQA where Madeline Jenkins presented information on the proposed credit matrix, which is a new approach linked to key aspects of our qualifications system.

The Forum also provided an opportunity for the VQA to listen to the views of individuals and organisations with an interest and involvement in qualifications, before they begin any detailed development work.

If you would like to get more involved with IELLEN Become a member

Complete an online application form
www.iellen.org.au
Or Email:
msavage@iellen.org.au
Or call: (03) 8598 9033
106 St.Kilda Road, St. Kilda
Vic 3182

Check out our Website

www.iellen.org.au

Information on...

- Early Exit Assist Program
- Upcoming events, forums, meetings.
- Download copies of the newsletter
- Resource documents for educators, business & youth

Plus lots more. If you have any suggestions for the website or newsletter please let us know:
efindlow@iellen.org.au